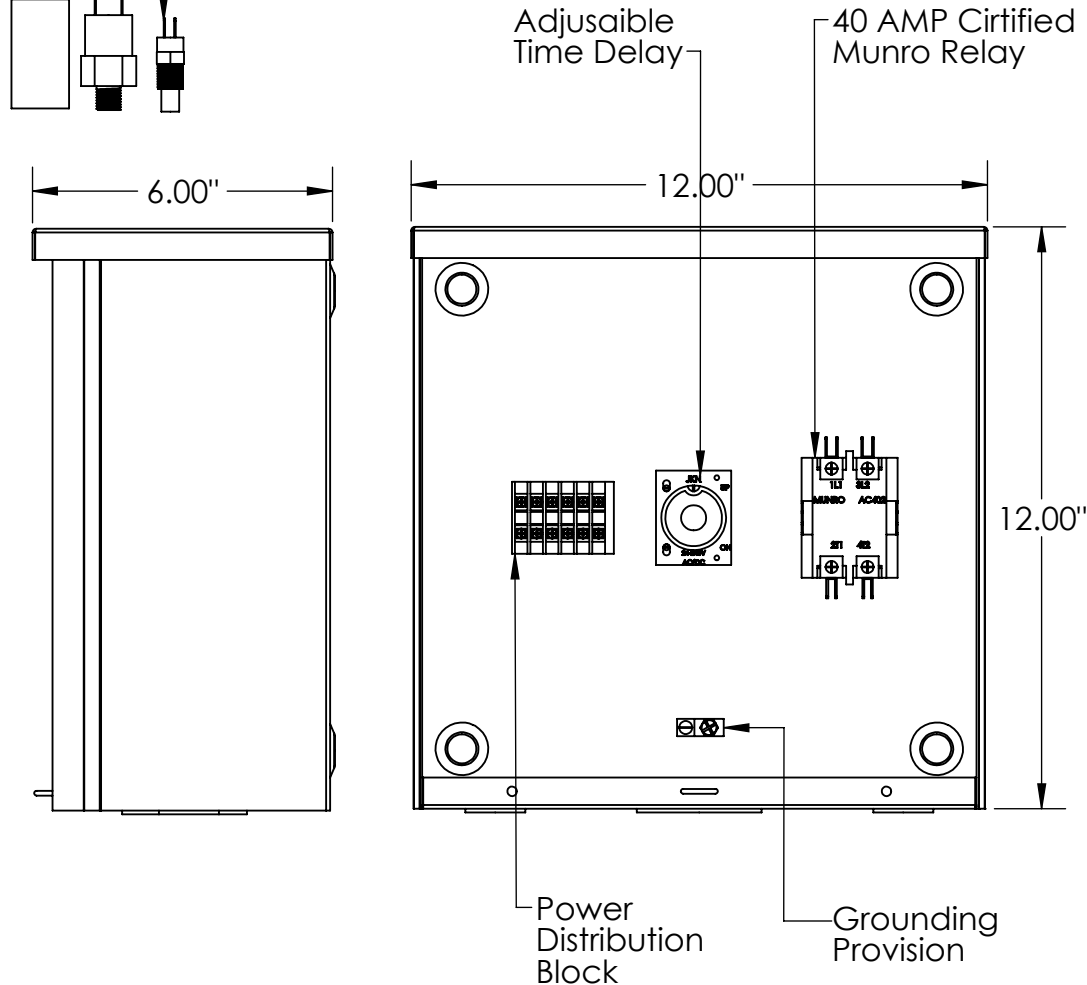


Pressure and Temperature Sensor and Boot Included.
Installed in the Pump Case
or in the Pump Discharge Piping.
Wired Back to SmartBox



MBRB241

StartBox - Rainwater Harvest Control Box

- Using a series of float control switches, the BrainBox monitors the water level in a holding tank. If there is sufficient held water to feed the pump when the start signal is received, the pump will pull the water from the tank. If there is not enough water available, the BrainBox opens an alternate water source. Available for use with 110v and 220v line voltage, single phase

Sensor and Control Features

- A preset pressure sensor alerts the control system of potential pump damage due to loss of prime or run-dry caused by a clogged filter
- A temperature sensor offers additional protection for pump and pipework in the case of dead head or a solenoid valve not opening
- Float controls are wired for 24v reduced external voltage, which is safer if people or pets could come in contact with external sensors or switches

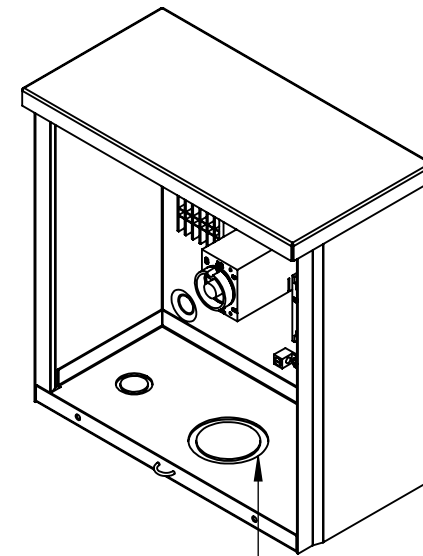
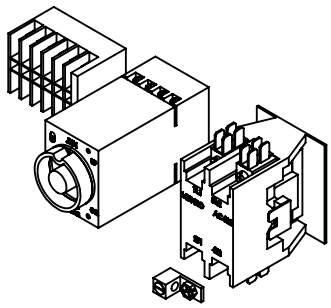
Construction

- Dimensions - 12"x12"x6"
- Color-coded wiring
- NEMA 3R UL listed enclosure - approved for outdoor use, available in stainless steel or powder coated blue or grey

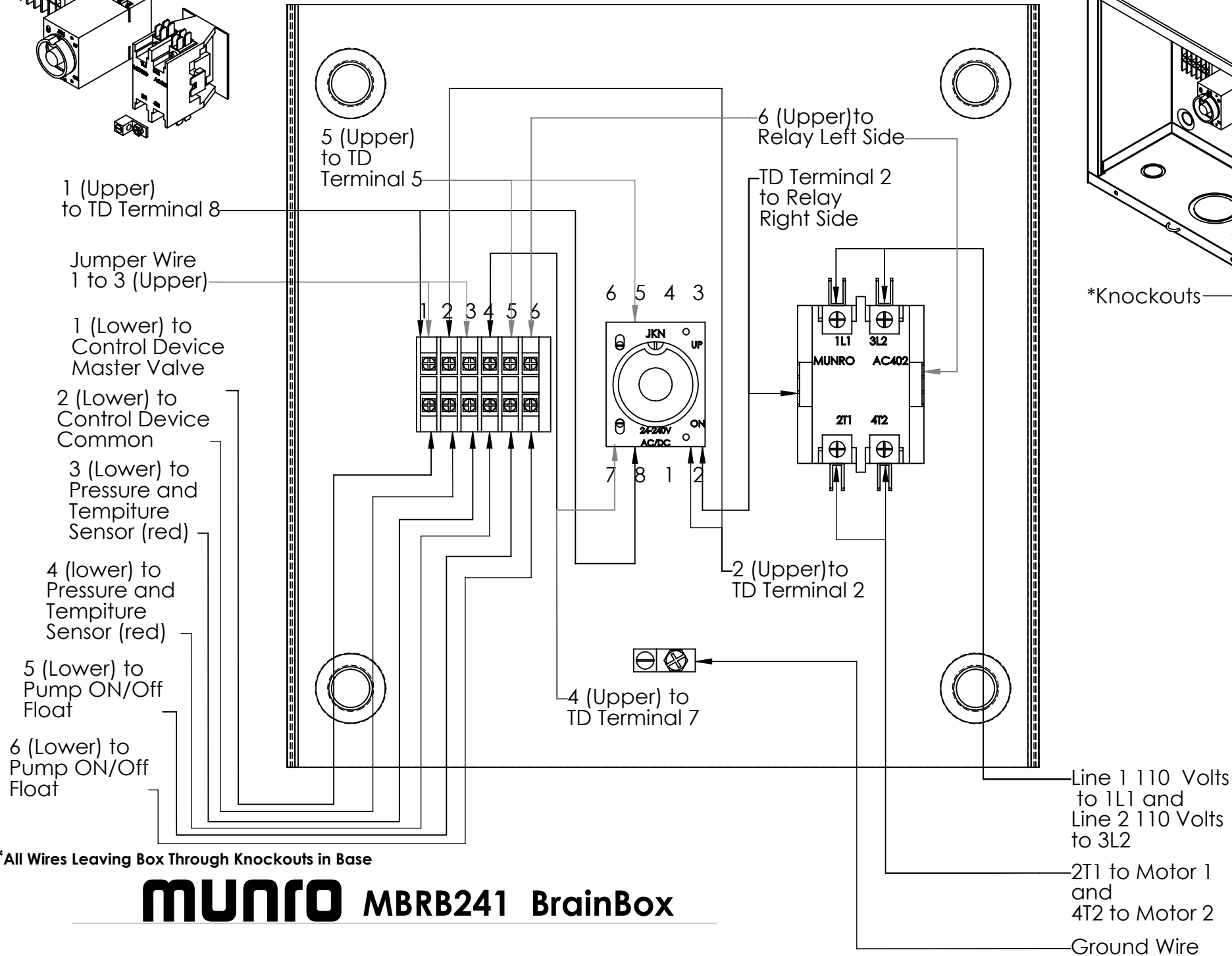
Specifications

- Signal Voltage: 24V
- Electrical Rating: 120v/240v - 24/28FLA
- Largest Motor: 110v - 2hp 220v - 5hp
- No. Floats: 1
- Line Voltage: 110
- Hertz: 60
- Phase: 1

MUNRO MBRB241 BrainBox



*Knockouts



MUNRO MBRB241 BrainBox