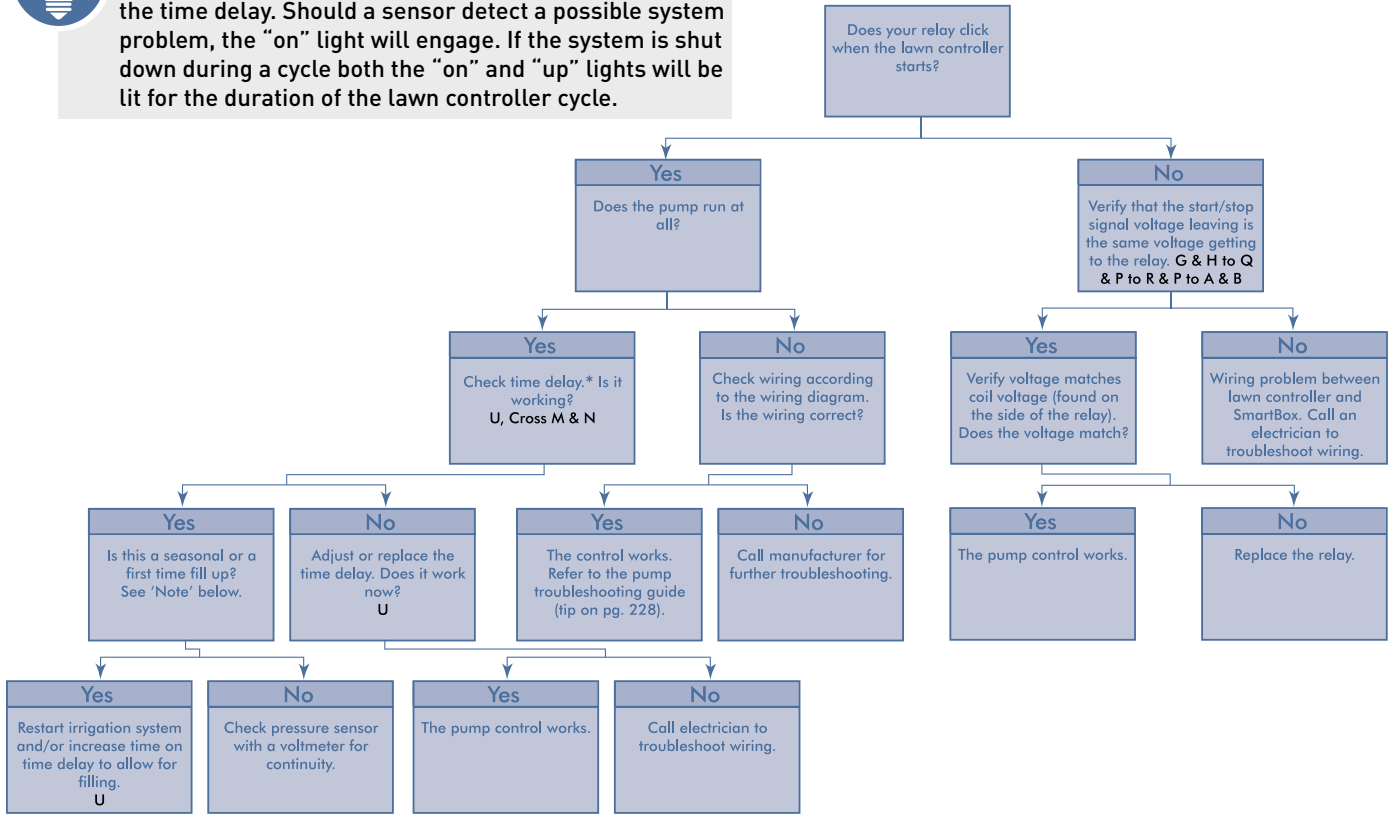




Did You Know?

During a normal “run” cycle, no lights should be lit on the time delay. Should a sensor detect a possible system problem, the “on” light will engage. If the system is shut down during a cycle both the “on” and “up” lights will be lit for the duration of the lawn controller cycle.



NOTE – OPTIONAL DOMESTIC VALVE: When a low pressure occurs a 24 VAC valve can be energized. Remove time delay relay from base by gently pulling it out. Connect 24 VAC valve, black wire to terminal 6 and connect white wire to terminal 2 with existing white wire, replace time delay relay by gently pushing it in.

* Turn the time delay down to 5 seconds. Next, cross the red and blue wire. The “on” light should turn on. After 5 seconds the system should shut off and both the “on” and “up” lights should be on.

Note: Filling system lines may require multiple run cycles to build enough pressure to initiate the sensor.

