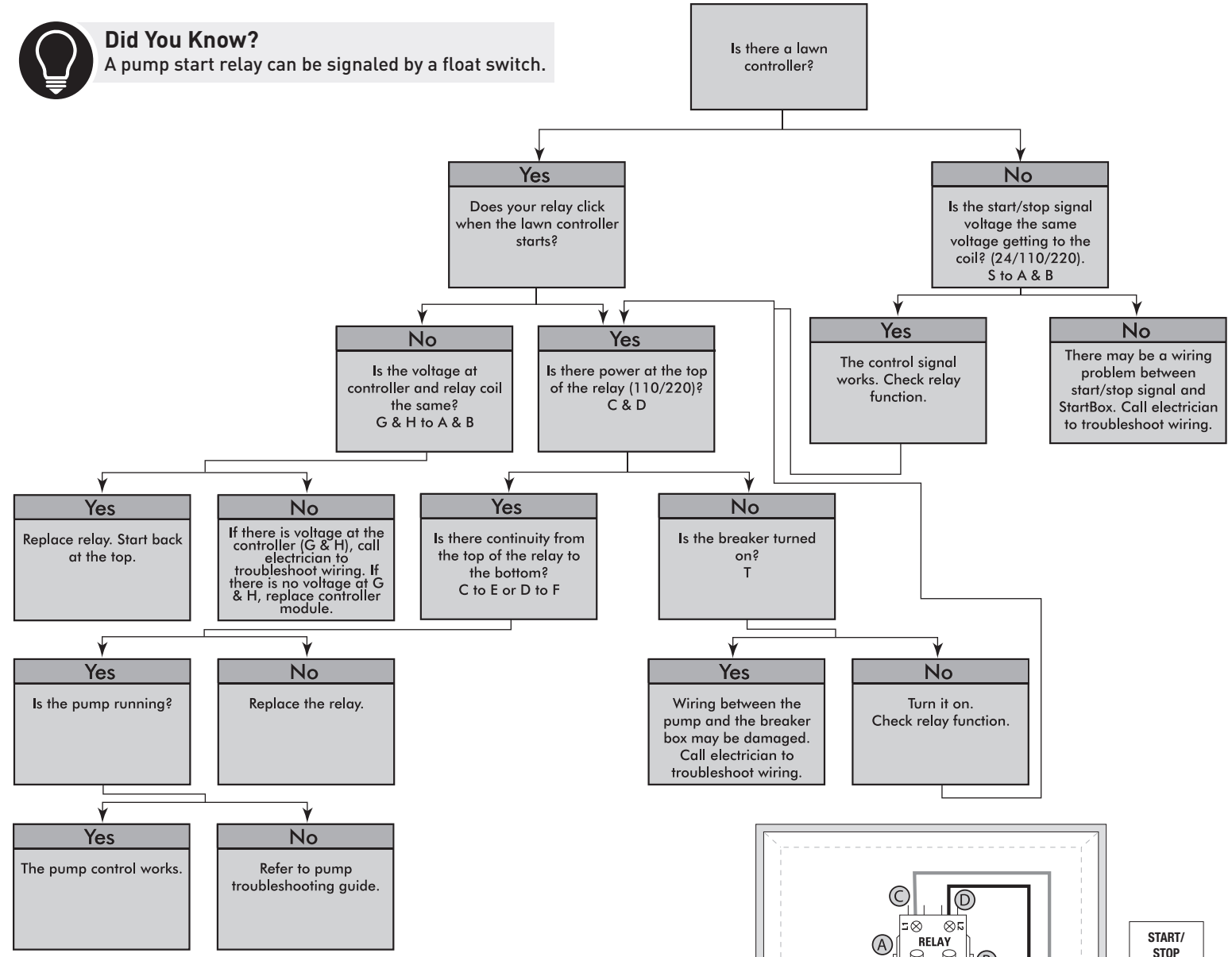




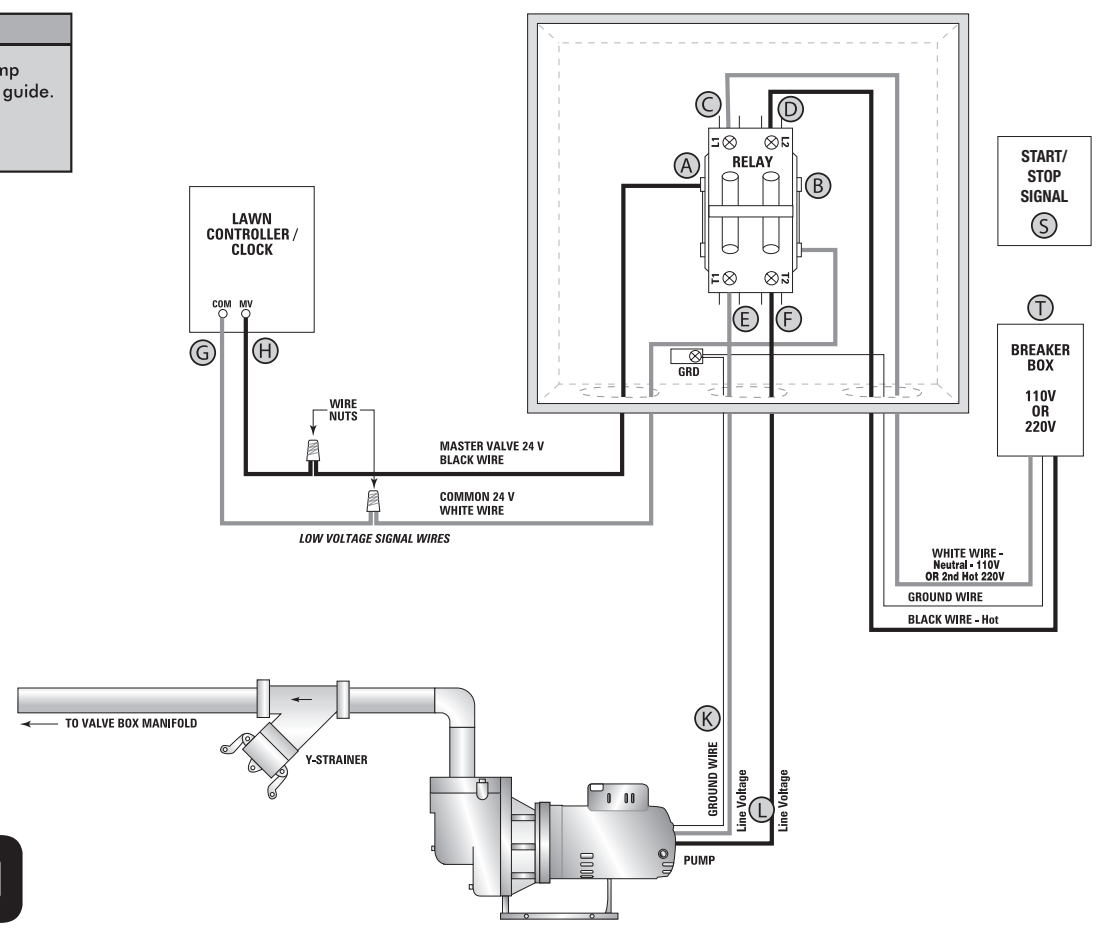
**Did You Know?**  
A pump start relay can be signaled by a float switch.



Note: Start/Stop signals include, but not limited to, float switches, HOA's, timers etc.

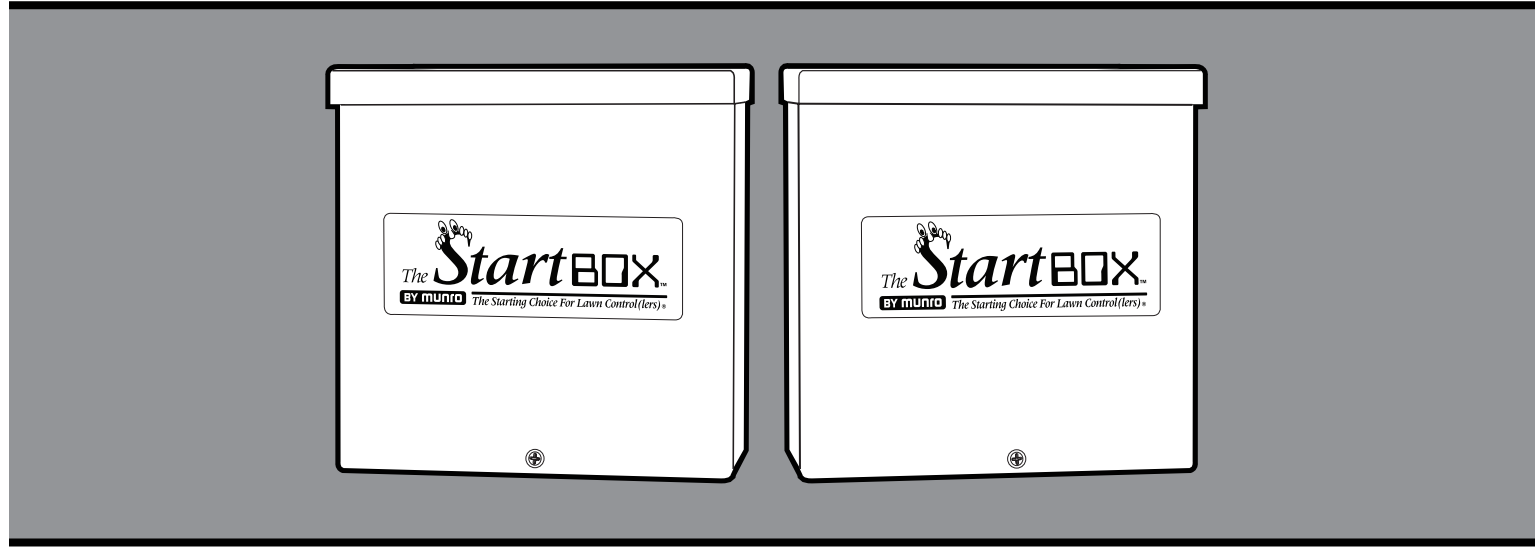
Note: The StartBox & SmartBox troubleshooting guides do not apply to 2-wire decoder systems.

Call Munro technical support for any questions relating to this product.  
Toll Free: 1.800.942.4270



# OWNER'S MANUAL

## MUNRO STARTBOX SERIES



Installation - Operation - Parts

Part Number	Line Voltage	Control Voltage	External Packaged Components
• MPSR110	110 VAC	110 VAC	N/A
Δ MPSR110A		Safe 24 VAC	N/A
* MPSR110AFPU		Safe 24 VAC	Pump Up Float Control
* MPSR110AFPD		Safe 24 VAC	Pump Down Float Control
• MPSR220	220 VAC	220 VAC	N/A
Δ MPSR220A		Safe 24 VAC	N/A
* MPSR220AFPU		Safe 24 VAC	Pump Up Float Control
* MPSR220AFPD		Safe 24 VAC	Pump Down Float Control
* MPSR24		24 VAC	N/A

- Standard Pump Start Relay with Line Voltage Control
- Δ Safe 24 VAC Control Voltage outside of Control Box
- \* Safe 24 VAC Control Voltage with Float Controls included

1.800.942.4270  
www.munropump.com



# Typical StartBox Installation

**NOTE:**  
Refer to specific wiring diagram located on inside cover of enclosure.

Step 1

**Turn Breaker "OFF"**

- Never work with electrical wiring on a live circuit.

**WARNING**

Step 2

**Wire Lawn Controller**

- Locate the Master Valve (mv) and Common (com) inside Lawn Controller.
- Wire MV to BLACK wire lead in StartBox, secure with wire nuts.
- Wire COM to WHITE wire lead in StartBox, secure with wire nuts.

Step 3

**Wire Relay to Pump**

- Refer to wiring diagram on motor plate for proper voltage and wire placement.
- Refer to NEC wire cable chart for proper size of wire. Undersized wire can affect pump performance.

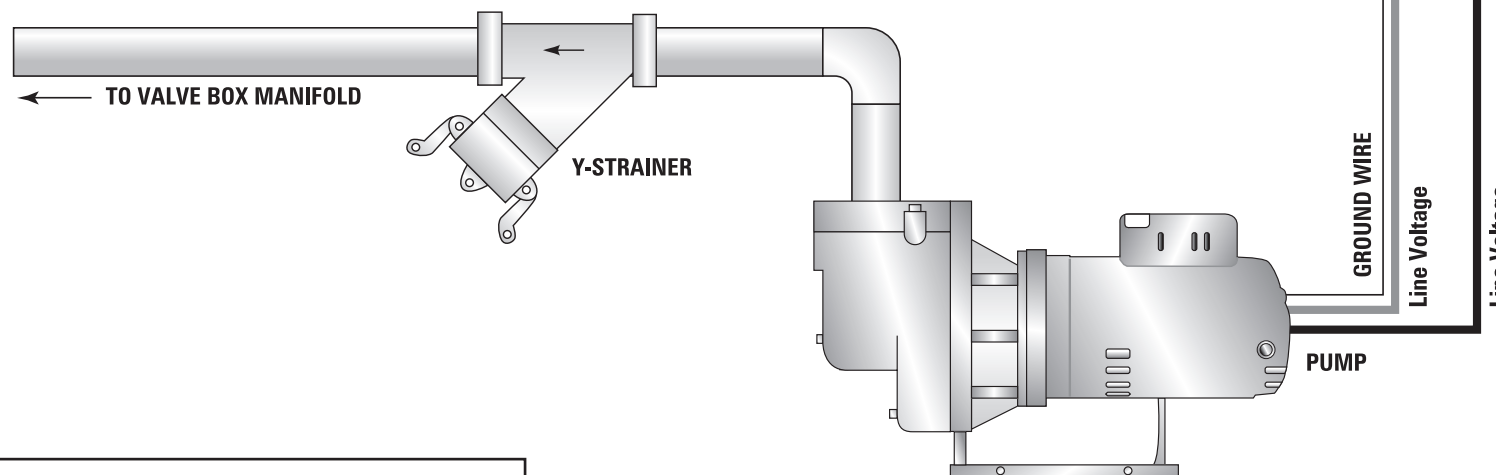
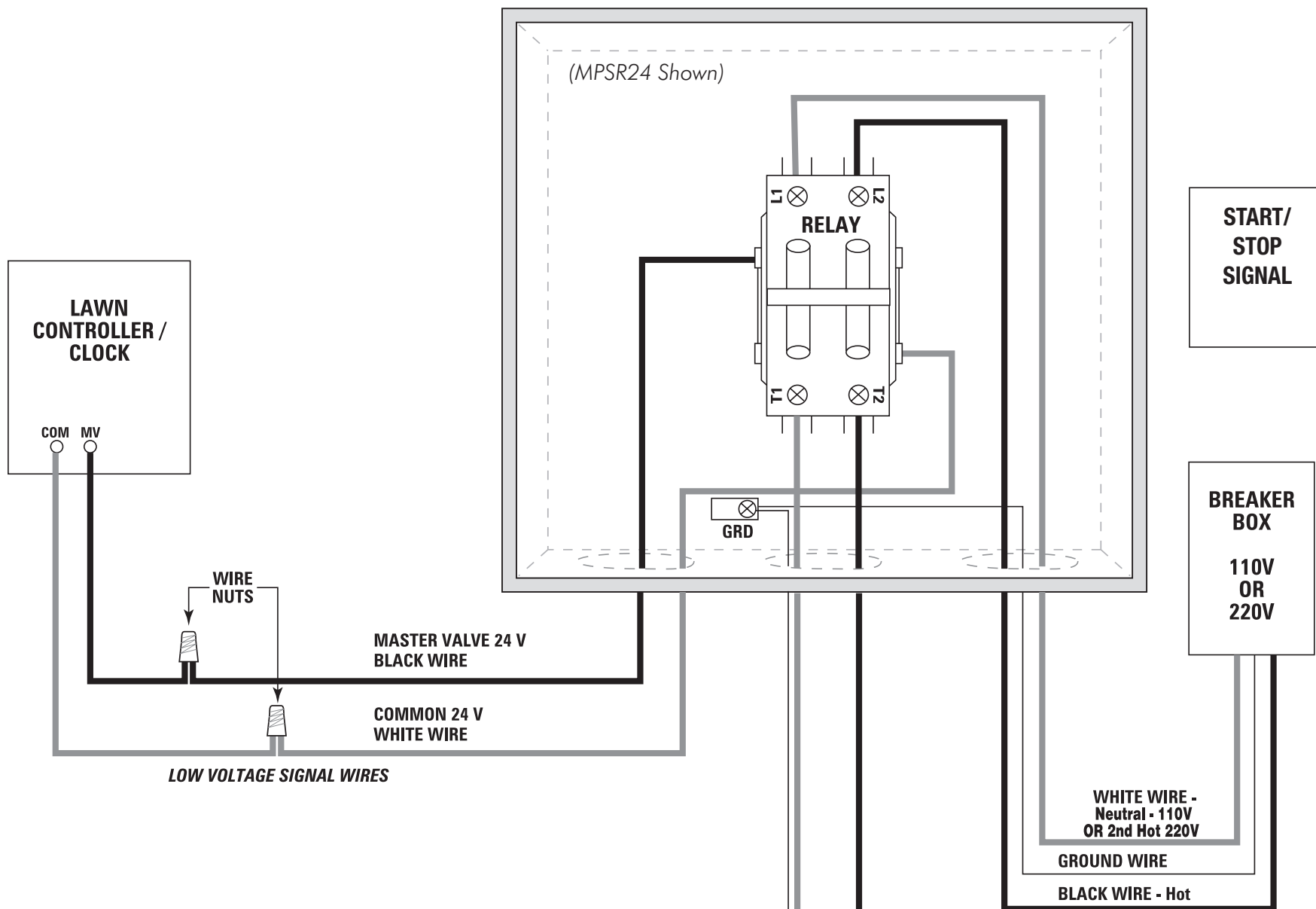
Step 4

**Wire Power Supply**

- Run power supply wires from breaker box (110 v or 220 v).
- Attach GREEN grounding wire. (Always use power service ground.)
- Attach BLACK HOT to L2 on relay.
- Attach WHITE Neutral (110 v) / second HOT (220 v) to L1 on relay.

Step 5

**Turn Breaker "On"**



**WARNING**

DO NOT ATTEMPT TO REWIRE OR ALTER WIRING IN THE STARTBOX OR WARRANTY WILL BE VOIDED.